



# Bridgetech Innovations LLP



## BT MULTI JET WATER METER Multi Jet Dry Type

BT MULTI JET WATER METER is a turbine super dry water meter for residential application in sizes 15mm, 20mm, 25mm, 32mm, 40mm and 50mm for cold and hot potable water and meets the international standard ISO4064 Class B.

### Features

- All the materials in contact with water are meeting potable water standard.
- Body material is brass or plastic (reinforced polymerization), corrosion resistance.
- Magnetic drive, lower transmission resistance.
- Magnetic shield, for external magnetic field protection.
- Copper can register, IP68 protection from the environment, ensures clear reading, frost resistance and freezing resistance.
- Inlet strainer.
- Non return valve to avoid the reserve flow rate (optional);
- Pre-equipped pulse output.
- Complete solid lockable plastic shell for long lifetime to stop tampering.
- Water temperature:  $\leq 50^{\circ}\text{C}$  for cold water meter;  $\leq 90^{\circ}\text{C}$  for hot water meter.
- Water pressure:  $\leq 1\text{MPa}$  or 1.6MPa optional (10bar or 16bar optional).



9845218310 / 8050001961



[www.bridgetechinnovations.com](http://www.bridgetechinnovations.com)  
[www.apartmentmeters.com](http://www.apartmentmeters.com)



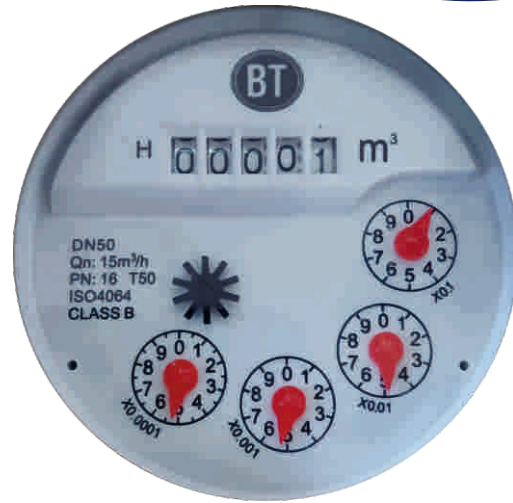
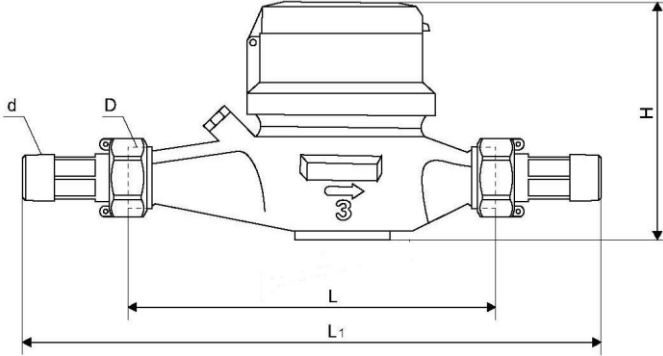
[sales@bridgetechinnovations.com](mailto:sales@bridgetechinnovations.com)



S-2, Hemavathi Shelters, SBM Road, Uttarahalli Road,  
KSRTC Layout, Bangalore - 560061

## Dial Plate Design

Dimension Picture



- Maximum flow rate and arrow are indicated on the both sides of the meter body.
- The lid can open 180°

Meter size	Length (L)	Width (W)	Height (H)	Connecting Thread
mm	mm			D
15	165/190	98	104	G 3/4B
20	190/195	98	106	G 1B
25	260/225	103	115	G1 1/4B
32	260/230	103	115	G1 1/2B
40	300/245	124	153	G 2'B
50	300	124	153	G2 1/2 B

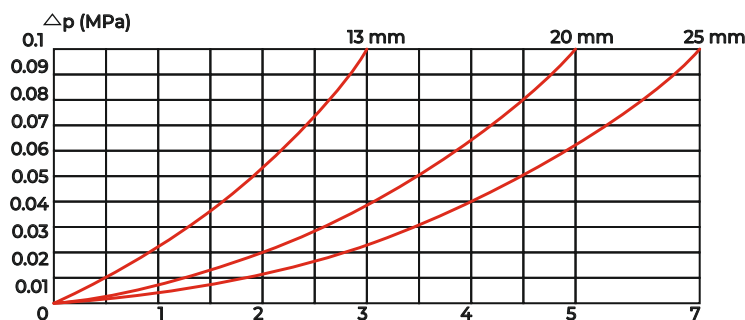
Main Technical Data According to ISO4064 :1993

Size	Inch	Class	Qmax	Qn	Qt	Qmin	Min reading	Max reading
			Maximum flow	Nominal flow	Transitional flow	Min flow		
DN(mm)			m³/h		L/h		m³	
15	1/2"	B	3	1.5	120	30	0.00005	99999
20	3/4"	B	5	2.5	200	50	0.00005	99999
25	1	B	7	3.5	280	70	0.00005	99999
32	1 1/4"	B	12	6	480	120	0.00005	99999
40	1 1/2"	B	20	10	800	200	0.00005	99999
50	2"	B	30	15	3000	450	0.00005	99999

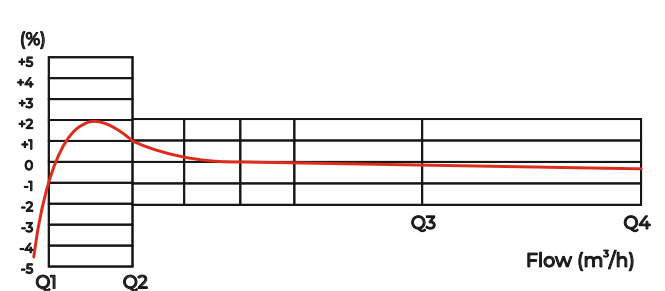
## Maximum Permissible Error

- In the lower zone from Qmin(Q1) inclusive up to but excluding Qt (Q2) is  $\pm 5\%$ .
- In the upper zone from Qt(Q2) inclusive up to and including Qmax(Q4) is  $\pm 2\%$  (cold water meter).
- In the upper zone from Qt(Q2) inclusive up to and including Qmax(Q4) is  $\pm 3\%$  (hot water meter).

Pressure Loss Curve



Flow Error Curve



## Installation requirements

- The meter should be installed in horizontal position with the direction of the flow as indicated by the arrow cast in the meter body with the register face upwards.
- Pipeline must be flushed before installation.
- The meter should be constantly full of water during operation.
- We suggest the installation of the water meter as

